



## UCLP15

# 1.5 Metre Medium Duty Cliplock Roof Mast

Data Sheet 121205

### Main Features

- Robust mast designed for class-licenced and single licenced microwave antennas
- Designed for Kliplock roofs
- Hot-dipped, galvanized members with stainless steel hardware
- Two-axis mast feet to adapt to any roof angle
- Available with options of 2-4 support arms
- Designed & manufactured in Australia
- 3 year warranty

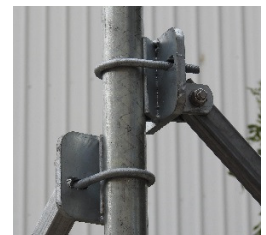
### Dimensions

	UCLP15
Main Pole Diameter	48mm
Main Pole Height	1.5Metres
Support Arm Size	30mm x 30mm
Support Arm Length	2.0 Metres
Weight	16Kg



### Installation Notes

- Channel goes over Kliplock ridges and clamps directly to them
- For added security channel can be tek-screwed into the top of the ridge
- Pole clamps can be moved on the pole to allow best placement of the feet.
- Support arms can be shortened if required by re-drilling the single hole for the foot.



PacSat  
Pacific Satellite Pty Ltd  
3/958 Carcoola Street  
North Albury, NSW 2640  
AUSTRALIA



Ph: 02 6040 1617  
[www.pacsat.com.au](http://www.pacsat.com.au)  
[sales@pacsat.com.au](mailto:sales@pacsat.com.au)