



LCLP30

3.0 Metre Heavy Duty Cliplock Roof Mast

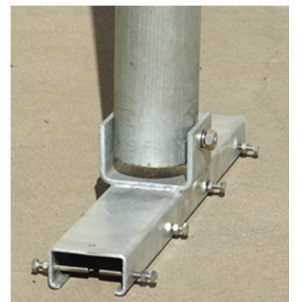
Data Sheet 121205

Main Features

- Robust mast designed for licenced microwave antennas where minimal movement is required
- Designed for cliplock roofs
- Hot-dipped, galvanized members with stainless steel hardware
- Two-axis mast feet to adapt to any roof angle
- Available with options of 2 to 4 support arms
- Designed & manufactured in Australia
- 24-month warranty

Dimensions

	LCLP30
Main Pole Diameter	76mm
Main Pole Height	3.0Metres
Support Arm Size	30mm x 30mm
Support Arm Length	3.5 Metres
Weight	33kg



Installation Notes

- Channel goes over cliplock ridges and clamps directly to them
- For added security channel can be tek-screwed into the top of the ridge
- Pole clamps can be moved on the pole to allow best placement of the feet.
- Support arms can be shortened if required by re-drilling the single hole for the foot.



PacSat
Pacific Satellite Pty Ltd
3/958 Carcoola Street
North Albury, NSW 2640
AUSTRALIA



Ph: 02 6040 1617
www.pacsat.com.au
sales@pacsat.com.au